



enjoy the beauty of nature everyday

URBANE[®]

Premium Quality Solid Bamboo Flooring

When Tradition Meets Innovation



The mention of bamboo conjures up images of adorable pandas munching away or an exotic Zen garden reflecting calmness and serenity. However, the appeal of bamboo goes way beyond that. For millennia, the supergrass (yes, it's botanically a grass and not wood!) has been used to fulfill countless of human's basic needs, from chopsticks to home building. Recent technological advancement and innovation has enabled raw bamboo stems to be converted into virtually anything that conventionally has been made from wood. This includes high quality interior furnishings and accessories, including bamboo flooring.

Unlike many rainforest hardwood trees that take decades or even centuries to grow to maturity, bamboo grows back almost immediately when harvested without the need of replanting. Taking only four to eight years to mature, bamboo is one of the fastest growing resources used in timber floor manufacturing. URBANE® Solid Bamboo Flooring offers a durable and environmentally friendly alternative to traditional hardwood floorings. It is an excellent choice of flooring and surface material for this generation and the generations to come.

why **URBANE[®]** solid bamboo flooring?

Bamboo For Healthy Living

Imagine taking off your shoes and experience the lush feel and beauty of bamboo, right under your feet. With its remarkable inherent strength and hardness, URBANE[®] Solid Bamboo Flooring is the perfect option for those who appreciate beauty, longevity and sustainability. Simple to install and maintain, URBANE[®] Solid Bamboo Flooring is made from only the best bamboo using latest technology to ensure a high quality finish. With so many designs to choose from and options to fit every budget, URBANE[®] Solid Bamboo Flooring is fast becoming the popular choice for architects and designers.

Aspiring to bring design to a higher plane, URBANE[®] also offers other bamboo products to complement its high quality solid bamboo flooring including bamboo floor accessories, stair parts, wall panels, veneers, and doors.



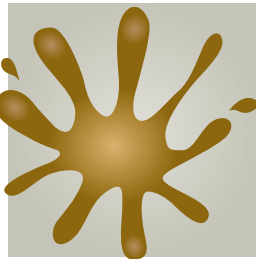
100% Solid Bamboo



Wear Resistant



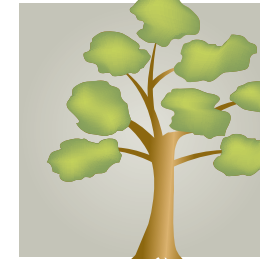
Scratch Resistant



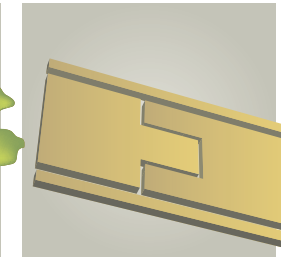
Stain Resistant



Insect Resistant



Environmentally Friendly



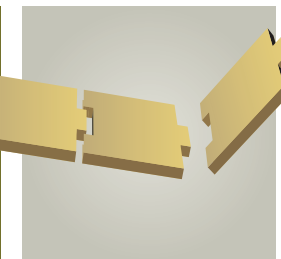
Dimensionally Stable



Warm & Radiant

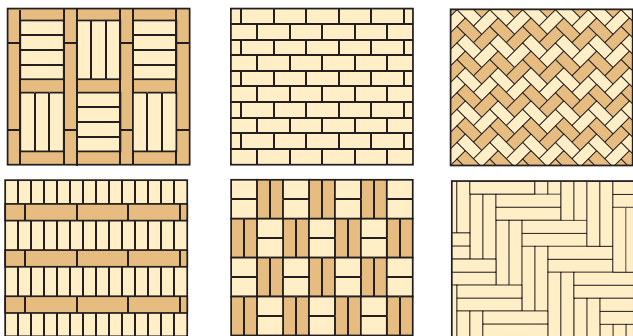


Easy to Maintain



Easy to Install

Design & Create A Pattern



SPECIFICATION

Size : 70 x 350 x 12mm

Structure : Vertical

Edge Design : Square edge without tongue and groove

Finish : Unfinished – To be finished on site

URBANE® CREATIVE COLOUR PALLETTE



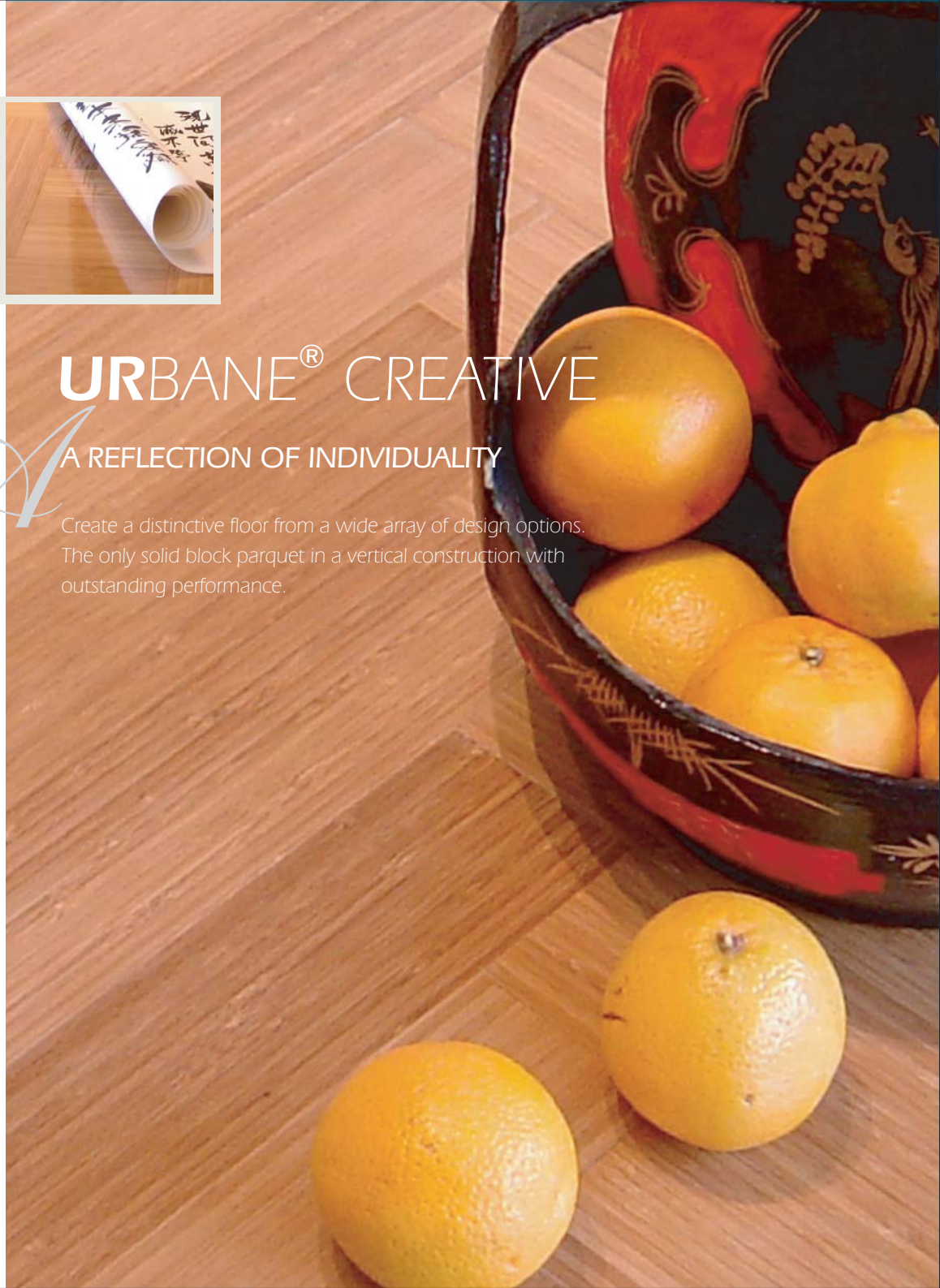
Natural

Carbonised

URBANE® CREATIVE

A REFLECTION OF INDIVIDUALITY

Create a distinctive floor from a wide array of design options.
The only solid block parquet in a vertical construction with
outstanding performance.





URBANE[®] PRIME

CONTEMPORARY STYLE MEETS CALMING BEAUTY

All the reliability of a multi layer constructed plank to highlight the aesthetic appearance of the floor. For those who want a contemporary look with quality performance.

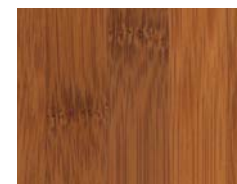
SPECIFICATION

Size :	92 x 920 x 15mm / 96 x 960 x 15mm
	92 x 1850 x 15mm / 96 x 1920 x 15mm
Structure :	Horizontal / Vertical
Edge Design :	Micro bevelled edge with tongue and groove
Finish :	Matt – Prefinished with Aluminium Oxide UV Finish

URBANE[®] PRIME COLOUR PALLETTE



Natural



Carbonised



URBANE[®] CLASSIC

THE CASUAL COMFORTS OF WIDE PLANKS

The wide dimensions of the plank combined with the finest selection of bamboo increases the aesthetic appearance of the floor bringing a sense of style and unrivalled elegance to an interior space.

SPECIFICATION

Size :	143 x 960 x 17mm
Structure :	Horizontal – Matched or Scattered Joints
Edge Design :	Micro bevelled edge with tongue and groove
Finish :	Matt or Gloss – Prefinished with Aluminium Oxide UV Finish

URBANE[®] CLASSIC COLOUR PALLETTE



RUSTIC LIGHT

RUSTIC DARK





URBANE[®] SIGNATURE

COLOUR YOUR WORLD WITH STYLE

Features a luxuriously rich and smooth contemporary look with a high quality stain finish whilst utilising all the technical qualities of the Classic range.

SPECIFICATION

Size :	143 x 960 x 17mm
Structure :	Horizontal – Matched or Scattered Joints
Edge Design :	Micro bevelled edge with tongue and groove
Finish :	Matt or Gloss – Prefinished with Aluminium Oxide UV Finish

URBANE[®] SIGNATURE COLOUR PALLETTE



Green Tea



Brown Tea



URBANE[®] HONOR

*S*UBLIME BEAUTY BY UNSURPASSED TECHNOLOGY

Highly durable, URBANE[®] HONOR offers incomparable beauty and superb practicality. Ranks amongst the hardest species of hardwood floor, it is twice as hard as normal bamboo.



URBANE[®] HONOR COLOUR PALLETTE



Natural



Carbonised

SPECIFICATION

Size :	95 x 950 x 15mm / 95 x 1900 x 15mm
Structure :	Strand Woven
Edge Design :	Micro bevelled edge with tongue and groove
Finish :	Semi-Gloss – Prefinished with Aluminium Oxide UV Finish

BAMBOO ACCESSORIES



t-moulding



stair nosing



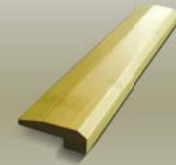
skirting



base shoe



reducer



threshold



- Bamboo Fancy Tiles
- Bamboo Fancy Edge
- Bamboo Veneer
- Bamboo Wall Panels
- Bamboo Doors
- Bamboo Stair Accessories
- Bamboo Deckings
and many more



BAMBOO

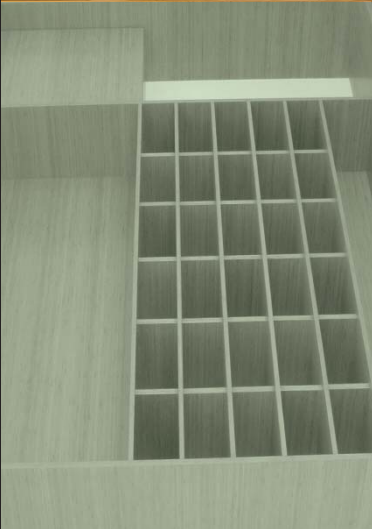
is stronger and more stable than...

	Janka Hardness (psi)	Dimensional Change Coefficient
Bamboo	1800	0.00144
Paduak	1725	0.00180
Wenge	1630	0.00201
Keruing	1520	0.00527
Hard Maple	1450	0.00353
Australian Cypress	1375	0.00162
White Oak	1360	0.00365
White Ash	1320	0.00274
American Beech	1300	0.00431
Red Oak	1290	0.00369
Angelique	1290	0.00312
Yellow Birch	1260	0.00338
Heart Pine	1225	0.00263
Ramin	1190	0.00308
Meranti	1140	0.00289
Teak	1155	0.00186
Black Walnut	1010	0.00274
Black Cherry	950	0.00248
Elm	830	0.00338
Mahogany	800	0.00238
Southern Yellow Pine	690	0.00265
Douglas Fir	660	0.00267
Poplar	600	0.00289
Yellow Cedar	580	0.00208

The Janka hardness measures the force (1 lb per square inch) to embed a 0.444 inch steel ball to half its diameter in the wood. This is one of the best measures of the ability of wood species to withstand denting and wear.

The dimensional change coefficient measures the wood tangential shrinkage and swelling within normal moisture content limits of 6 to 14 percent.

However, the values above are not absolute and will vary with temperature, humidity, elevation, soil, subspecies, and other factors. The ratings are intended as approximate values only.



PROJECT REFERENCE





www.urbaneflooring.com

URBANE[®]

enjoy the beauty of nature everyday

All products are subject to availability. All product specifications are correct at the time of printing but may be subject to change without notice. As bamboo is a natural product, variations in colour naturally occur. Please contact us for installation details.

ADWINMA SDN BHD (91485-W)

No.35, Lian Hoe Garden, Jalan Kuchai Lama,
58100 Kuala Lumpur, Malaysia.

Tel: 603-7983 1399, 7983 1848, 7983 1998

Fax: 603-7981 3836

Email: adwinma@email.com

© Copyright 2008 Adwinma Sdn Bhd. All Rights Reserved.